



# PX Series Centrifugal Pump

## APPLICATION

- Centrifugal pumps with single impeller are able to offer high flow rates, provide smooth, nonpulsating delivery, and regulate the flow rate over a wide range without damaging the pump.
- For the correct functioning of the pump, use clean water, or non-aggressive liquids charged with small solid impurities.
- To be used in flow irrigation system in gardening, agriculture and industrial fittings.

## OPERATING CONDITIONS

- Liquid temperature up to 60°C
- Ambient temperature up to 40°C
- Total suction lift up to 9m
- Continuous duty

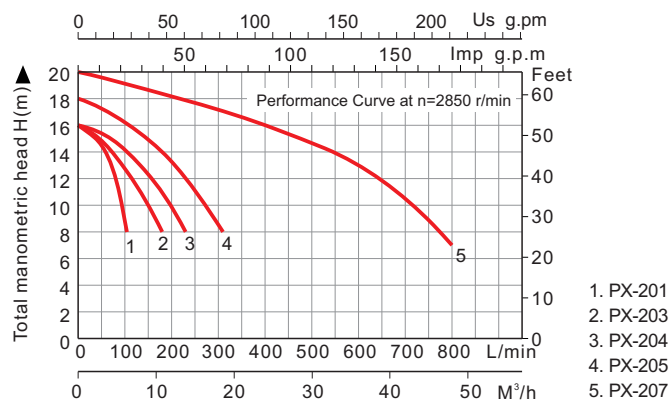
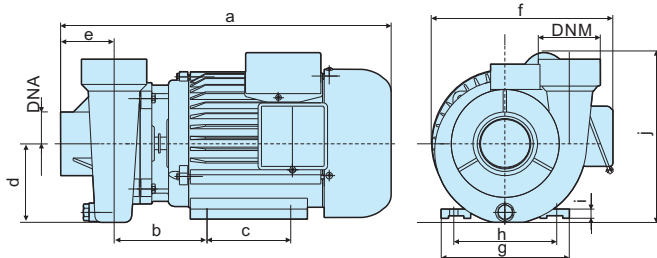
## CONSTRUCT

### PUMP

Pump Body: Cast Iron  
Impeller: Brass  
Mechanical Seal: Carbon / Ceramic / Stainless Steel

### MOTOR

Single Phase  
Heavy Duty Continuous Work  
Motor Housing: Cast Iron  
Shaft: Carbon Steel / Stainless Steel  
Insulation: Class B / Class F  
Protection: IP44 / IP54  
Cooling: External Ventilation



## TECHNICAL DATA (220~240V/50Hz)

Model	Single-phase Motor			n=2850r/min			US g.p.m Imp g.p.m m <sup>3</sup> /h L/min	Q	H meter
	Input max kW	Output Power kW HP	Current A	Q.max L/min	H.max m	Suct.max m			
PX-201	0.80	0.55 0.75	3.8	105	16		0 5.28 10.6 15.9 21.1 23.78 27.7 47.6 60.8 82 106 159 211		
PX-203	1.10	0.75 1.00	5.2	180	16		0 4.4 8.8 13.2 17.6 19.8 23.1 39.6 50.6 68 88 132 176		
PX-204	1.50	1.10 1.50	7.0	230	16		0 1.2 2.4 3.6 4.8 5.4 6.3 10.8 13.8 19 24 36 48		
PX-205	2.10	1.50 2.00	9.6	310	18		0 20 40 60 80 90 105 180 230 310 400 600 800		
PX-207	2.90	2.20 3.00	17.1	800	20		16 15.5 15 14 12 10.5 8		
							16 15.6 15.2 14.5 13.6 13.2 12.5 8		
							16 15.8 15.6 15.3 14.8 14.5 14 11 8		
							18 17.8 17.5 17 16.6 16.2 15.8 14 12 8		
							20 19.9 19.8 19.7 19.5 19.3 19 18 17.5 17 16 13 7		

Other voltages and frequencies available on request.

## OVERALL & INSTALLATION DIMENSIONS

Model	DIMENSIONS (mm)															PACKAGE DIMENSIONS & G.W.					
	DNA		DNM		a	b	c	d	e	f	g	h	i	j	k	l	m	A	B	H	kg
	Inch	mm	Inch	mm																	
PX-201	1"	25	1"	25	300	130	75	80	30	190	138	110	10	180	--	--	--	350	220	230	15.00
PX-203	1.5"	40	1.5"	40	330	155	90	80	45	190	138	110	10	199	--	--	--	360	220	230	16.50
PX-204	2"	50	2"	50	330	155	90	80	45	190	138	110	10	199	--	--	--	360	220	230	18.00
PX-205	2"	50	2"	50	390	182	100	90	67	226	168	140	10	206	--	--	--	430	280	265	22.00
PX-207	3"	75	3"	75	405	165	245	122	98	238	185	145	10	280	--	--	--	520	330	310	33.80

