



MS SERIES

Three-phase Asynchronous Motor With Aluminium Housing

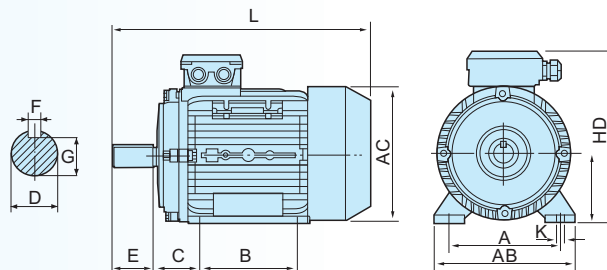
MS series aluminium housing three-phase asynchronous motors, with latest design in entirety, are made of selected quality materials and conformed to IEC standard.

MS motors have good performance, safety and reliable operation, nice appearance, and can be maintained very conveniently, while with low noises, little vibration and at the same time light weight and simple construction. These motors can be used for general drive.

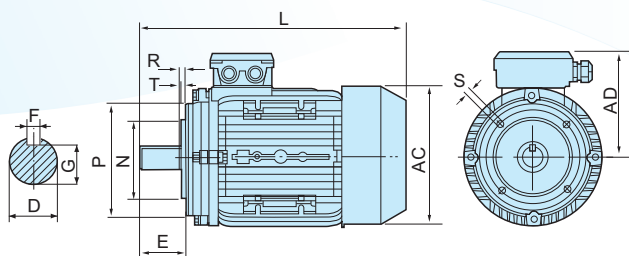
OPERATING CONDITIONS

Ambient temperature:	$-15^{\circ}\text{C} \leq \theta \leq 40^{\circ}\text{C}$
Altitude:	Not exceeding 1000meters
Rated voltage:	$380\text{V} \pm 5\%$
Rated frequency:	50Hz (60Hz is available on request)
Duty/Rating:	Continuous (S1)
Insulation class:	Class B/F
Protection class:	IP54
Cooling method:	IC 0141

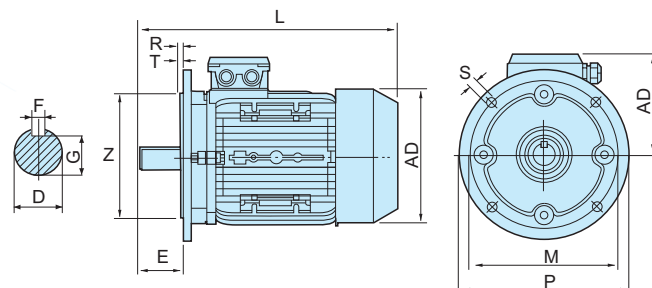
IMB3



IMB14



IMB5



MS SERIES MOTOR OVERALL & INSTALLATION DIMENSIONS

Frame Size	Installation Size (mm)									Installation Size (mm) IMB14					Installation Size (mm) IMB5					Overall Dimension (mm)				
	A	B	C	D	E	F	G	H	K	M	N	P	S	T	M	N	P	S	T	AB	AC	AD	HD	L
56	90	71	36	9	20	3	7.2	56	6	65	50	80	M5	2.5	98	80	120	7	3	110	120	110	155	195
63	100	80	40	11	23	4	8.5	63	7	75	60	90	M5	2.5	115	95	140	10	3	130	130	115	165	230
71	112	90	45	14	30	5	11	71	7	85	70	105	M6	2.5	130	110	160	10	3.5	145	145	125	185	255
80	125	100	50	19	40	6	15.5	80	10	100	80	120	M6	3	165	130	200	12	3.5	160	165	135	215	295
90S	140	100	56	24	50	8	20	90	10	115	95	140	M8	3	165	130	200	12	3.5	180	185	145	235	335
90L	140	125	56	24	50	8	20	90	10	115	95	140	M8	3	165	130	200	12	3.5	180	185	145	235	360
100L	160	140	63	28	60	8	24	100	12	130	110	160	M8	3.5	215	180	250	15	4	205	215	170	255	380
112M	190	140	70	28	60	8	24	112	12	130	110	160	M8	3.5	215	180	250	15	4	245	240	180	285	400
132S	216	140	89	38	80	10	33	132	12	165	130	200	M10	4.0	265	230	300	15	4	280	275	195	325	475
132M	216	178	89	38	80	10	33	132	12	165	130	200	M10	4.0	265	230	300	15	4	280	275	195	325	515
160M	254	210	108	42	110	12	37	160	15	215	180	250	M12	4.0	300	250	350	15	5	320	330	255	420	615
160L	254	254	108	42	110	12	37	160	15	215	180	250	M12	4.0	300	250	350	15	5	320	330	255	420	670
180M	279	241	121	48	110	14	42.5	180	15	265	230	300	M15	4.0	300	250	350	19	5	355	380	280	455	700
180L	279	279	121	48	110	14	42.5	180	15	265	230	300	M15	4.0	300	250	350	19	5	355	380	280	455	740

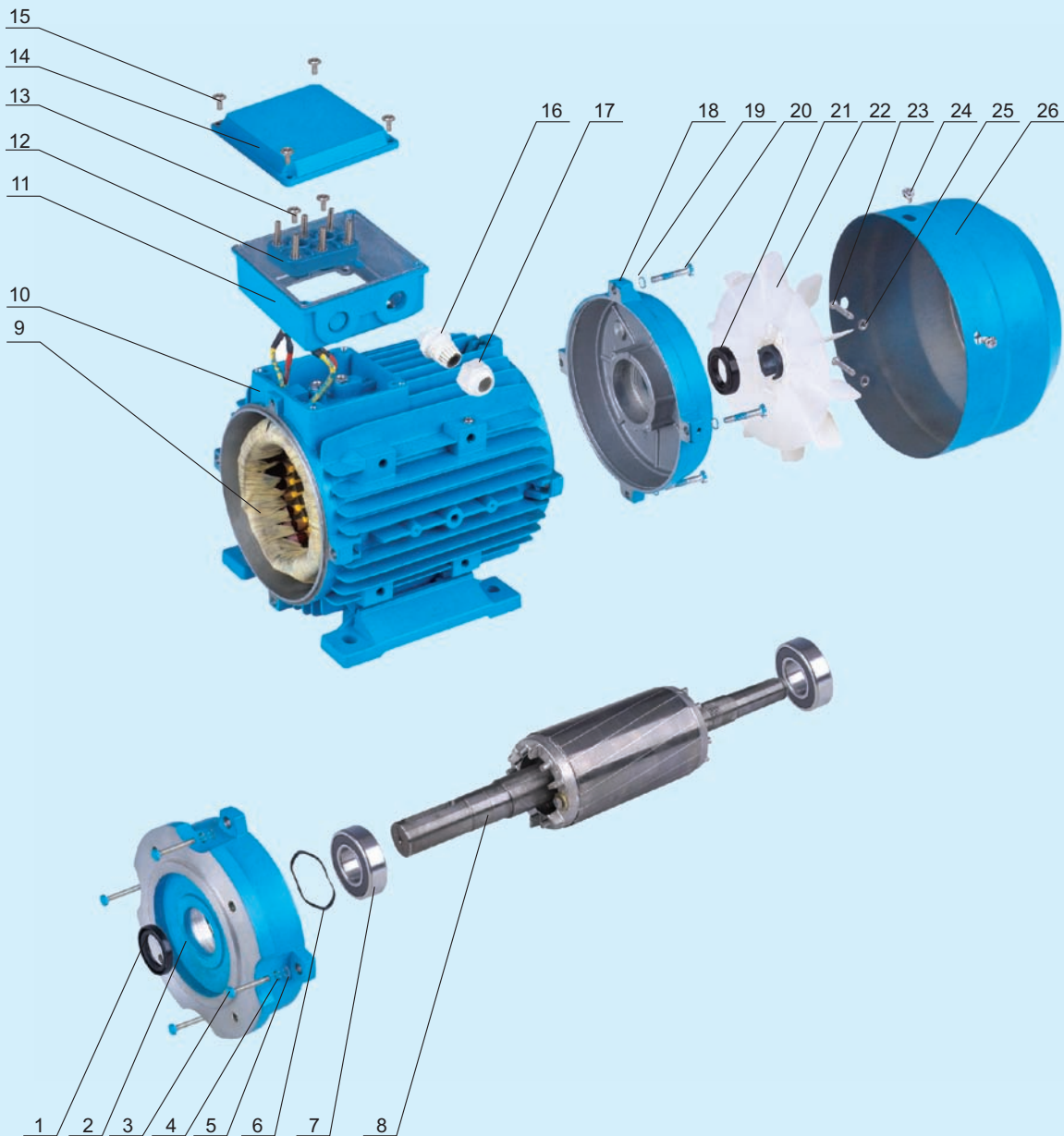
MS SERIES MOTOR TECHNICAL DATA

Model	Output		Voltage (V)	Current (A)	Speed (r.p.m)	Eff (%)	Power factor	Start torque Rated torque	Start current Rated current	Max. torque Rated torque
	HP	KW								
380V 50Hz Synchronous Speed 3000 r/min (2 poles)										
MS5612	0.12	0.09	220/380	0.56/0.32	2800	62	0.68	2.3	6.0	2.4
MS5622	0.16	0.12	220/380	0.66/0.38	2800	67	0.71	2.3	6.0	2.4
MS6312	0.24	0.18	220/380	0.92/0.53	2800	69	0.75	2.3	6.0	2.4
MS6322	0.33	0.25	220/380	1.17/0.68	2800	72	0.78	2.3	6.0	2.4
MS7112	0.5	0.37	220/380	1.66/0.96	2800	73.5	0.80	2.3	6.0	2.4
MS7122	0.75	0.55	220/380	2.34/1.35	2800	75.5	0.82	2.3	6.0	2.4
MS8012	1	0.75	220/380	3.04/1.75	2800	76.5	0.85	2.3	6.0	2.4
MS8022	1.5	1.1	220/380	4.42/2.55	2800	77	0.85	2.3	6.5	2.4
MS90S-2	2	1.5	220/380	5.94/3.44	2800	78	0.85	2.3	6.5	2.4
MS90L-2	3	2.2	220/380	8.36/4.83	2800	80.5	0.86	2.3	6.5	2.4
MS100L-2	4	3	220/380	11.1/6.39	2870	82	0.87	2.3	7.0	2.4
MS112M-2	5.5	4	380/660	8.17/4.72	2890	85.5	0.87	2.3	7.0	2.4
MS132S1-2	7.5	5.5	380/660	11.1/6.41	2900	85.5	0.88	2.3	7.0	2.4
MS132S2-2	10	7.5	380/660	15.0/8.67	2900	86.2	0.88	2.3	7.0	2.4
MS160M1-2	15	11	380/660	21.6/12.5	2930	88	0.88	2.0	7.0	2.2
MS160M2-2	20	15	380/660	28.8/16.6	2930	89	0.89	2.0	7.0	2.2
MS160L-2	25	18.5	380/660	34.7/20.0	2930	90	0.9	2.0	7.0	2.2
MS180M-2	30	22	380/660	41.6/23.7	2930	90.5	0.9	2.0	7.0	2.2
380V 50Hz Synchronous Speed 1500 r/min (4 poles)										
MS5614	0.08	0.06	220/380	0.49/0.28	1400	56	0.58	2.2	5.5	2.3
MS5624	0.12	0.09	220/380	0.67/0.39	1400	58	0.61	2.2	5.5	2.3
MS6314	0.16	0.12	220/380	0.84/0.48	1400	60	0.63	2.2	5.5	2.3
MS6324	0.24	0.18	220/380	1.12/0.65	1400	64	0.66	2.2	5.5	2.3
MS7114	0.33	0.25	220/380	1.44/0.83	1400	67	0.68	2.2	5.5	2.3
MS7124	0.5	0.37	220/380	1.95/1.12	1400	69.5	0.72	2.2	5.5	2.3
MS8014	0.75	0.55	220/380	2.70/1.56	1400	73.5	0.73	2.3	6.0	2.4
MS8024	1	0.75	220/380	3.49/2.01	1400	75.5	0.75	2.3	6.0	2.4
MS90S-4	1.5	1.1	220/380	4.76/2.75	1400	78	0.78	2.3	6.0	2.4
MS90L-4	2	1.5	220/380	6.32/3.65	1400	79	0.79	2.3	6.0	2.4
MS100L1-4	3	2.2	220/380	8.94/5.16	1430	79	0.82	2.3	7.0	2.4
MS100L2-4	4	3	220/380	12.0/6.95	1430	81	0.81	2.3	7.0	2.4
MS112M-4	5.5	4	380/660	8.98/5.19	1400	82.5	0.82	2.3	7.0	2.4
MS132S-4	7.5	5.5	380/660	11.8/6.80	1400	84.5	0.84	2.3	7.0	2.4
MS132M-4	10	7.5	380/660	15.7/9.05	1400	85.5	0.85	2.3	7.0	2.4
MS160M-4	15	11	380/660	22.3/12.9	1460	88	0.85	2	7.0	2.2
MS160L-4	20	15	380/660	30.1/17.4	1460	89	0.85	2	7.0	2.2
MS180M-4	25	18.5	380/660	36.5/21.1	1470	90.5	0.85	2.2	7.0	2.2
MS180L-4	30	22	380/660	43.2/25.0	1470	91	0.85	2.2	7.0	2.2
380V 50Hz Synchronous Speed 1000 r/min (6 poles)										
MS7116	0.24	0.18	220/380	1.26/0.73	900	57	0.66	2.2	5.5	2.2
MS7126	0.33	0.25	220/380	1.64/0.95	900	59	0.68	2.0	5.5	2.2
MS8016	0.5	0.37	220/380	2.24/1.30	900	62	0.70	2.0	5.5	2.2
MS8026	0.75	0.55	220/380	3.09/1.79	900	65	0.72	2.0	5.5	2.2
MS90S-6	1	0.75	220/380	3.89/2.25	910	72.5	0.70	2.0	5.5	2.2
MS90L-6	1.5	1.1	220/380	5.47/3.16	910	73.5	0.72	2.1	5.5	2.2
MS100L-6	2	1.5	220/380	6.88/3.98	940	77.5	0.74	2.1	5.5	2.2
MS112M-6	3	2.2	220/380	9.72/5.61	940	80.5	0.74	2.1	6.5	2.3
MS132S-6	4	3	220/380	12.5/7.23	960	83	0.76	2.2	6.5	2.3
MS132M1-6	5.5	4	380/660	9.40/5.43	960	84	0.77	2.2	6.5	2.3
MS132M2-6	7.5	5.5	380/660	12.6/7.25	960	85.3	0.78	2.0	6.5	2.3
MS160M-6	10	7.5	380/660	16.6/9.56	970	86	0.8	2.0	7.0	2.0
MS160L-6	15	11	380/660	24.2/14.0	970	87.5	0.79	2.0	7.0	2.0
MS180L-6	20	15	380/660	31.6/18.3	970	89	0.81	2.0	7.0	2.0
380V 50Hz Synchronous Speed 750 r/min (8 poles)										
MS801-8	0.25	0.18		0.88	630	51	0.61	1.8	4.0	1.9
MS802-8	0.34	0.25		1.15	640	54	0.61	1.8	4.0	1.9
MS90S-8	0.50	0.37		1.49	660	62	0.61	1.8	4.0	1.9
MS90L-8	0.75	0.55		2.18	660	63	0.61	1.8	4.0	2.0
MS100L1-8	1	0.75		2.17	690	71	0.67	1.8	4.0	2.0
MS100L2-8	1.5	1.1		2.39	690	73	0.69	1.8	5.0	2.0
MS112M-8	2	1.5		4.50	680	75	0.69	1.8	5.0	2.0
MS132S-8	3	2.2		6.00	710	78	0.71	1.8	6.0	2.0
MS132M-8	4	3.0		7.90	710	79	0.73	1.8	6.0	2.0
MS160M1-8	5.5	4.0		10.3	720	81	0.73	1.9	6.0	2.0
MS160M2-8	7.5	5.5		13.6	720	83	0.74	2.0	6.0	2.0
MS160L-8	10	7.5		17.8	720	85.5	0.75	2.0	6.0	2.0

**220V/440V,380V/660V models are available on request.

THREE-PHASE ASYNCHRONOUS MOTOR WITH ALUMINIUM HOUSING

MS Series



No.	DESCRIPTION	No.	DESCRIPTION	No.	DESCRIPTION
1	Oil-seal	10	Motor Base	19	Spring Washer
2	Motor Fore Cover	11	Terminal Box	20	Motor Base-Motor Rear Cover Screw
3	Motor Cover-Motor Case Screw	12	Terminal Board	21	Oil-Seal
4	Spring Washer	13	Screw For Terminal Board	22	Fan
5	Plain Washer	14	Terminal Box Cover	23	Screw For Fan
6	Adjusting Ring	15	Screw or Terminal Box Cover	24	Screw For Fan Cover
7	Ball Bearing	16	Plug Screw	25	Nut
8	Shaft And Rotor	17	Terminal Box Plug	26	Fan Cover
9	Stator With Winding	18	Motor Rear Cover		