

GX SERIES

High Efficiency Motor

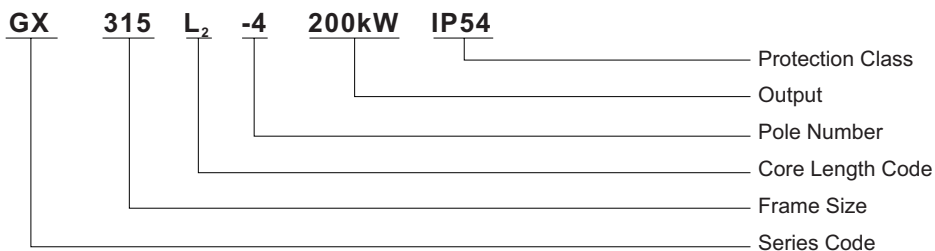
The GX series high efficiency standard three phase induction motors are totally enclosed fan cooled squirrel cage motors that are manufactured with new material and technology. It is a new generation motor and can save energy.

GX series motors center height: H80-H400, Output:0.55-500kw, pole: 2、4、6、8. Degree of protection: IP55, cooling method: IC411, Mounting dimensions conform to IEC standard, Rated voltage: 380V, Rated frequency: 50HZ, Ambient temperature: 40°C max, Altitude: 1000m, Duty: continuous(S1).

GX series high efficiency three phase induction motors have some notable advantages such as high efficiency, good starting performance, low noise, improved structure, improved cooling capabilities, This series motors are three phase induction motors which can be used for general motors and can be used to drive all kinds of general purpose machines such as compressors, ventilators, pumps, ect. Other uses such as petrol chemical, medical, chemical industries and mining. For special requirements please contact our sales department.

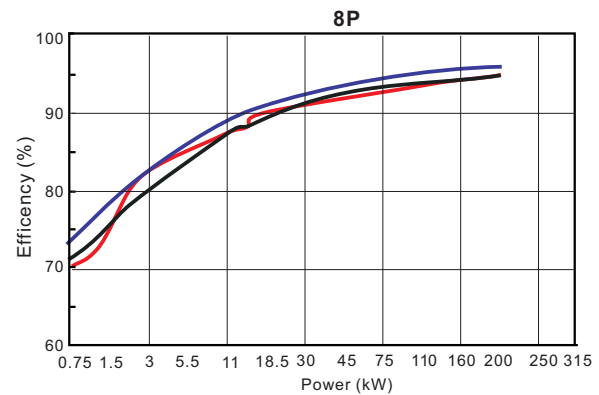
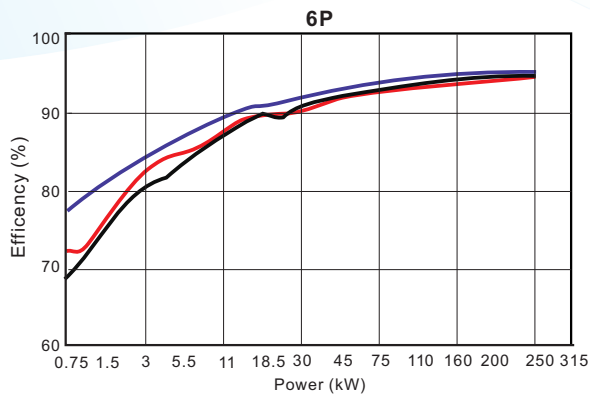
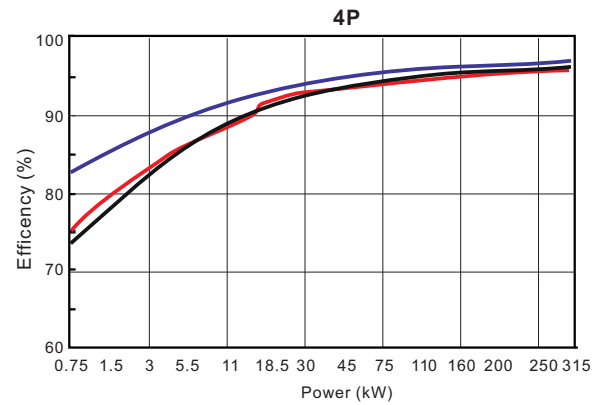
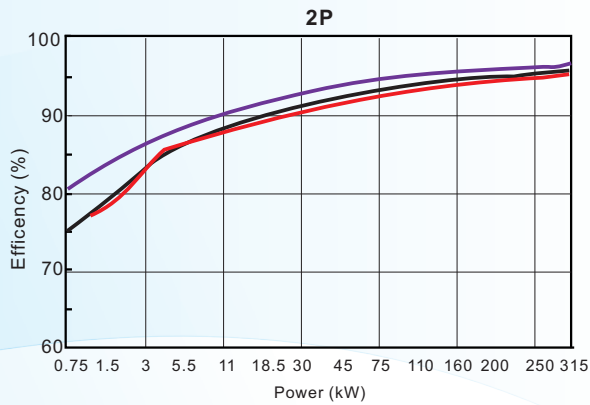
GX series motors are equal with Y2 series three phase induction motors in dimensions.

MEANING OF TYPE CODE



Y/Y2/GX MOTORS EFFICIENCY CURVES AND DATA

— GX series motors — Y2 series motors — Y series motors



Power (KW)	2 Poles			4 Poles			6 Poles			8 Poles		
	Y	Y2	GX	Y	Y2	GX	Y	Y2	GX	Y	Y2	GX
0.55	--	73	--	73	71	80.7	--	65	68.0	--	63	73.5
0.75	75	75	80.5	74.5	73	82.2	72.5	69	77.7	70	71	73.5
1.1	77	77	82.2	78	75	83.8	73.5	72	79.9	72	73	76.3
1.5	78	79	84.1	79	78	85.0	77.5	76	81.5	75	75	78.4
2.2	80.5	81	85.6	81	80	86.4	80.5	79	83.4	80.5	78	80.9
3	82	83	86.7	82.5	82	87.4	83	81	84.9	82	79	82.7
4	85.5	85	87.6	84.5	84	88.3	84	82	86.1	84	81	84.2
5.5	85.5	86	88.5	85.5	85	89.2	85.3	84	87.4	85	83	85.8
7.5	86.2	87	89.5	87	87	90.1	86.0	86	88.5	86	85.5	87.2
11	87.2	88	90.6	88	88	91.0	87.0	87.5	89.8	87.5	87.5	88.8
15	88.2	89	91.3	88.5	89	91.8	89.5	89	90.7	88	88	90.0
18.5	89	90	91.8	91	90.5	92.2	89.8	90	91.3	89.5	90	90.7
22	89	90.5	92.2	91.5	91	92.6	90.2	90	91.8	90	90.5	91.2
30	90	91.2	92.9	92.2	92	93.2	90.2	91.5	92.5	90.5	91.0	92.1
37	90.5	92	93.3	91.8	92.5	93.6	90.8	92	93.0	91	91.5	92.7
45	91.5	92.3	93.7	92.3	92.8	93.9	92	92.5	93.5	91.7	92	93.2
55	91.5	92.5	94.0	92.6	93	94.2	92	92.8	93.9	92.0	92.8	93.7
75	92	93.2	94.6	92.7	93.8	94.7	92.8	93.5	94.4	92.5	93	94.4
90	92.5	93.8	94.8	93.5	94.2	95.0	93.2	93.8	94.8	93.0	93.8	94.7
110	92.5	94	95.1	93.5	94.5	95.3	93.5	94	95.1	93.3	94	95.1
132	93	94.5	95.4	94	94.8	95.5	93.8	94.2	95.4	93.8	93.7	95.4
160	93.5	94.6	95.5	94.5	94.9	95.7	94.1	94.5	95.6	94.0	94.2	95.7
185	93.5	94.6	95.5	94.5	94.9	95.7	94.3	94.5	95.6	94.2	94.2	95.7
200	93.5	94.8	95.5	94.5	95	95.7	94.3	94.7	95.6	94.3	94.5	95.7
220	94.2	94.8	95.8	94.4	95	95.9	94.5	94.7	95.6	--	--	--
250	94.5	95.3	96.0	94.7	95.3	96.0	94.7	94.7	95.6	--	--	--
280	94.7	95.3	96.0	94.9	95.3	96.2	--	--	--	--	--	--
315	95.0	95.6	96.4	95.2	95.6	96.4	--	--	--	--	--	--

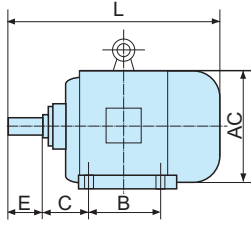
HIGH EFFICIENCY MOTOR TECHNICAL DATA

Type	Rated output		At full load				Efficiency %		Current			Torque		Noise Level LP dB(A)	Moment of inertia kgm ²	Weight B3 kg
			Rotate Speed r/min	Current		Power factor COS φ			Locked /Rated	Locked /Rated	Maximum /Rated					
	kW	HP		380V A	400V A		FL 100%	FL 75%								
380V 50Hz Synchronous Speed 3000 r/min (2 poles)																
GX 80-2	0.75	1	2845	1.71	1.62	0.83	80.5	81.5	6.8	2.2	2.3	60	0.0010	18		
GX 80 ₂ -2	1.1	1.5	2840	2.45	2.33	0.83	82.2	84.7	7.2	2.2	2.3	65	0.0013	20		
GX 90S-2	1.5	2	2840	3.19	3.03	0.85	84.1	85.2	7.5	2.2	2.3	68	0.0020	25		
GX 90L-2	2.2	3	2825	4.59	4.36	0.85	85.6	86.8	7.6	2.2	2.3	65	0.0026	29		
GX 100L-2	3	4	2880	6.04	5.74	0.87	86.7	88.2	8.1	2.2	2.3	65	0.0042	39		
GX 112M-2	4	5.5	2880	7.88	7.49	0.88	87.6	87.4	8.3	2.2	2.3	68	0.0058	50		
GX 132S1-2	5.5	7.5	2915	10.7	10.2	0.88	88.5	89.8	8.3	2.2	2.3	70	0.0128	69		
GX 132S2-2	7.5	10	2915	14.5	13.7	0.88	89.5	90.1	7.7	2.2	2.3	72	0.0151	75		
GX 160M1-2	11	15	2940	20.7	19.7	0.89	90.6	90.9	7.5	2.2	2.3	72	0.0489	120		
GX 160M2-2	15	20	2935	28.0	26.6	0.89	91.3	91.6	7.5	2.2	2.3	72	0.0559	128		
GX 160L-2	18.5	25	2940	34.4	32.7	0.89	91.8	91.6	7.5	2.2	2.3	72	0.0648	142		
GX 180M-2	22	30	2950	40.3	38.3	0.90	92.2	92.0	7.5	2.2	2.3	77	0.0808	176		
GX 200L1-2	30	40	2955	54.5	51.8	0.90	92.9	92.6	7.5	2.0	2.3	75	0.163	250		
GX 200L2-2	37	50	2955	66.9	63.6	0.90	93.3	93.0	7.5	2.0	2.3	75	0.172	258		
GX 225M-2	45	60	2970	81.1	77.0	0.90	93.7	93.8	7.5	2.0	2.3	75	0.302	336		
GX 250M-2	55	75	2970	98.8	93.8	0.90	94.0	94.1	7.5	2.0	2.3	80	0.420	434		
GX 280S-2	75	100	2975	134	127	0.90	94.6	94.7	7.5	2.0	2.3	80	0.986	616		
GX 280M-2	90	125	2975	159	151	0.91	94.8	94.9	7.5	2.0	2.3	80	1.04	660		
GX 280M-2K	110	150	2980	191	181	0.92	95.1	95.4	7.1	1.8	2.2	80	1.30	755		
GX 315S-2	110	150	2976	192	182	0.92	95.1	95.2	7.1	1.8	2.2	80	1.33	980		
GX 315M-2	132	180	2978	231	219	0.91	95.4	95.5	7.1	1.8	2.2	82	1.50	1080		
GX 315L1-2	160	220	2978	280	266	0.91	95.5	95.6	7.1	1.8	2.2	86	1.67	1160		
GX 315L2-2	200	270	2978	349	332	0.91	95.6	95.6	7.1	1.8	2.2	87	1.88	1190		
GX 355M-2	250	340	2978	431	409	0.92	99.6	95.9	7.1	1.6	2.2	91	4.02	1760		
GX 355L-2	315	420	2978	540	513	0.92	96.4	96.3	7.1	1.6	2.2	91	4.86	1850		
380V 50Hz Synchronous Speed 1500 r/min (4 poles)																
GX 801-4	0.55	0.75	1395	1.38	1.31	0.75	80.7	80.8	6.5	2.2	2.2	58	0.0016	20		
GX 802-4	0.75	1	1400	1.85	1.76	0.75	82.2	82.2	6.6	2.2	2.2	58	0.0020	21		
GX 90S-4	1.1	1.5	1390	2.59	2.46	0.77	83.8	83.8	6.8	2.3	2.3	62	0.0030	26		
GX 90L-4	1.5	2	1390	3.48	3.31	0.77	85.0	85.4	7.0	2.3	2.3	62	0.0077	31		
GX 100L1-4	2.2	3	1425	4.78	4.54	0.81	86.4	86.1	7.4	2.3	2.3	58	0.0093	40		
GX 100L2-4	3	4	1430	6.44	6.12	0.81	87.4	87.0	7.4	2.3	2.3	58	0.0128	44		
GX 112M-4	4	5.5	1440	8.39	7.97	0.82	88.3	88.0	7.5	2.3	2.3	60	0.0285	58		
GX 132S-4	5.5	7.5	1450	11.3	10.7	0.83	89.2	89.4	7.8	2.3	2.3	62	0.0366	70		
GX 132M-4	7.5	10	1450	15.1	14.3	0.84	90.1	90.4	7.4	2.3	2.3	62	0.0394	90		
GX 132M-4K	9.2	12.5	1460	18.5	17.5	0.84	90.1	91.1	7.4	2.3	2.3	62	0.0771	94		
GX 160M-4	11	15	1465	21.6	20.5	0.85	91.0	91.7	7.0	2.2	2.3	62	0.101	122		
GX 160L-4	15	20	1460	29.2	27.7	0.85	91.8	92.1	7.0	2.2	2.3	62	0.152	146		
GX 180M-4	18.5	25	1470	35.4	33.7	0.86	92.2	92.0	7.5	2.2	2.3	65	0.187	179		
GX 180L-4	22	30	1470	42.0	39.9	0.86	92.6	92.6	7.8	2.2	2.3	65	0.285	206		
GX 200L-4	30	40	1475	56.9	54.0	0.86	93.2	93.5	7.2	2.2	2.3	65	0.473	255		
GX 225S-4	37	50	1480	69.0	65.6	0.87	93.6	93.8	7.4	2.0	2.3	65	0.554	305		
GX 225M-4	45	60	1480	63.7	79.5	0.87	93.9	93.9	7.4	2.2	2.3	65	0.751	342		
GX 250M-4	55	75	1480	102	96.9	0.87	94.2	94.2	7.4	2.0	2.2	71	0.751	428		
GX 250M-4K	75	100	1485	137	130	0.88	94.7	94.5	7.4	2.2	2.3	73	0.824	515		
GX 280S-4	75	100	1485	139	132	0.87	94.7	94.8	7.2	2.2	2.3	74	1.92	657		
GX 280M-4	90	125	1485	165	157	0.87	95.0	95.1	7.2	2.2	2.3	74	2.32	748		
GX 280M-4K	110	150	1486	199	189	0.88	95.3	95.3	7.2	2.2	2.3	76	2.47	780		
GX 315S-4	110	150	1489	197	187	0.88	95.3	95.4	6.9	2.1	2.2	78	2.34	1000		
GX 315M-4	132	180	1488	236	224	0.88	95.5	95.6	6.9	2.1	2.2	79	2.58	1100		
GX 315L1-4	160	220	1488	284	269	0.89	95.7	95.8	6.9	2.1	2.2	82	2.96	1160		
GX 315L2-4	200	270	1487	357	339	0.89	95.7	95.8	6.9	2.0	2.2	82	3.46	1270		
GX 355M-4	250	340	1490	440	418	0.90	96.0	96.1	6.9	2.1	2.2	85	6.60	1830		
GX 355L-4	315	420	1490	552	524	0.90	96.4	96.5	6.9	2.1	2.2	85	7.55	1850		
GX 400L1-4	355	475	1489	643	611	0.87	96.4	96.5	6.9	1.6	2.2	85	13.3	2800		
GX 400L2-4	400	535	1489	725	688	0.87	96.4	96.5	6.9	1.6	2.2	85	14.1	2890		
GX 400L3-4	450	605	1489	814	774	0.87	96.5	96.6	6.9	1.6	2.2	85	15.3	2980		
GX 400L4-4	500	670	1489	894	849	0.88	96.6	96.2	6.9	1.6	2.2	85	17.1	3080		

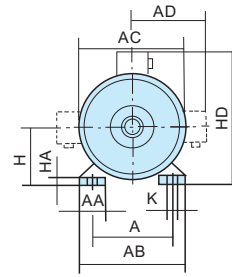
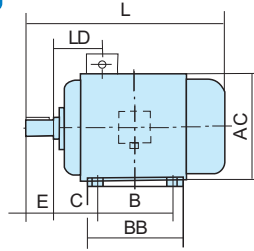
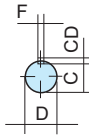


HIGH EFFICIENCY MOTOR TECHNICAL DATA

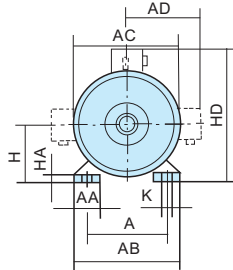
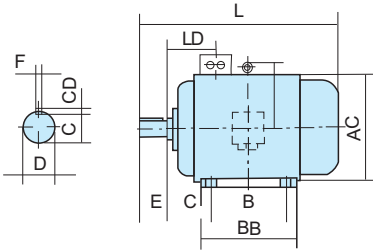
Type	Rated output		All full load				Efficiency %		Current			Noise Level LP dB(A)	Moment of inertia kgm ²	Weight B3 kg
			Rotate Speed r/min	Current		Power factor COS φ			Locked /Rated	Locked /Rated	Maximum /Rated			
	kW	HP		380V A	400V A		FL 100%	FL 75%						
380V 50Hz Synchronous Speed 1000 r/min (6 poles)														
GX 802-6	0.55	0.75	885	1.73	1.64	0.71	68.0	68.5	4.7	1.9	2.1	54	0.0026	21
GX 90S-6	0.75	1	920	2.04	1.94	0.72	77.7	78.8	5.9	2.0	2.1	56	0.0038	23
GX 90L-6	1.1	1.5	920	2.87	2.72	0.73	79.9	82.0	5.9	2.0	2.1	61	0.0053	31
GX 100L-6	1.5	2	945	3.73	3.54	0.75	81.5	81.3	6.0	2.0	2.1	62	0.0107	38
GX 112M-6	2.2	3	950	5.27	5.01	0.76	83.4	84.3	6.5	2.0	2.1	58	0.0151	52
GX 132S-6	3	4	960	7.06	6.71	0.76	84.9	86.0	6.8	2.1	2.1	60	0.0318	67
GX 132M1-6	4	5.5	965	9.29	8.82	0.76	86.1	88.3	6.9	2.1	2.1	60	0.0394	78
GX 132M2-6	5.5	7.5	965	12.4	11.8	0.77	87.4	87.7	7.1	2.1	2.1	60	0.0494	87
GX 160M-6	7.5	10	965	16.5	15.7	0.78	88.5	89.9	6.7	2.1	2.1	63	0.0964	118
GX 160L-6	11	15	965	23.6	22.4	0.79	89.8	90.5	6.9	2.0	2.1	63	0.127	140
GX 180L-6	15	20	975	31.0	29.5	0.81	90.7	90.4	7.2	2.0	2.1	63	0.201	185
GX 200L1-6	18.5	25	980	38.0	36.1	0.81	91.3	91.1	7.2	2.1	2.1	65	0.325	242
GX 200L2-6	22	30	980	43.9	41.7	0.83	91.8	91.9	7.5	2.1	2.1	65	0.371	258
GX 225M-6	30	40	985	58.7	55.7	0.84	92.5	92.9	7.1	2.1	2.1	66	0.533	303
GX 250M-6	37	50	990	71.1	67.6	0.85	93.0	92.7	7.0	2.1	2.1	66	0.877	395
GX 280S-6	45	60	990	85.2	81.0	0.86	93.5	93.7	7.0	2.1	2.0	70	1.85	567
GX 280M-6	55	75	990	103	96.3	0.86	93.9	94.4	7.0	2.1	2.0	70	2.12	625
GX 315S-6	75	100	989	142	133	0.86	94.4	94.1	7.0	2.0	2.0	74	2.61	990
GX 315M-6	90	125	988	168	159	0.86	94.8	94.9	7.0	2.0	2.0	74	3.04	1080
GX 315L1-6	110	150	989	204	194	0.86	95.1	95.1	6.7	2.0	2.0	74	3.71	1150
GX 315L2-6	132	180	988	242	230	0.87	95.4	95.8	6.7	2.0	2.0	74	4.24	1210
GX 355M1-6	160	220	991	293	275	0.88	95.6	95.7	6.7	1.9	2.0	74	7.44	1650
GX 355M2-6	200	270	990	361	343	0.88	95.6	95.7	6.7	1.9	2.0	74	9.10	1750
GX 355L-6	250	340	990	452	429	0.88	95.6	95.7	6.7	1.9	2.0	75	10.8	1850
GX 400L1-6	315	420	992	579	550	0.86	96.1	96.2	6.5	1.6	2.2	79	18.5	2764
GX 400L2-6	355	475	993	651	619	0.86	96.3	96.4	6.5	1.6	2.2	80	20.7	2910
GX 400L3-6	400	535	993	734	697	0.86	96.3	96.4	6.5	1.6	2.2	81	22.3	3030
GX 400L4-6	450	605	992	825	783	0.86	96.4	96.5	6.5	1.6	2.2	81	24.5	3110
380V 50Hz Synchronous Speed 750 r/min (8 poles)														
GX 90L-8	0.55	0.75	700	1.86	1.77	0.61	73.5	74.4	4.0	1.8	2.0	54	0.0053	31
GX 100L1-8	0.75	1	700	2.31	2.20	0.67	73.5	75.8	4.0	1.8	2.0	51	0.0078	33
GX 100L2-8	1.1	1.5	700	3.17	3.02	0.69	76.3	79.1	5.0	1.8	2.0	51	0.0107	38
GX 112M-8	1.5	2	705	4.21	4.00	0.69	78.4	80.8	5.0	1.8	2.0	52	0.0162	52
GX 132S-8	2.2	3	710	5.82	5.53	0.71	80.9	82.9	6.0	1.8	2.0	54	0.0331	67
GX 132M-8	3	4	710	7.76	7.37	0.71	82.7	84.7	5.5	2.0	2.0	54	0.0440	80
GX 160M1-8	4	5.5	715	9.89	9.39	0.73	84.2	85.7	6.0	1.9	2.1	56	0.0771	105
GX 160M2-8	5.5	7.5	715	13.2	12.5	0.74	85.8	87.4	6.0	2.0	2.0	56	0.0989	113
GX 160L-8	7.5	10	715	17.4	16.6	0.75	87.2	88.6	6.0	2.0	2.0	56	0.131	139
GX 180L-8	11	15	730	24.8	23.5	0.76	88.8	89.0	6.6	2.0	2.0	60	0.214	184
GX 200L-8	15	20	730	33.3	31.7	0.76	90.0	90.3	6.6	2.0	2.0	65	0.401	260
GX 225S-8	18.5	25	735	40.8	38.7	0.76	90.7	90.7	6.6	1.9	2.0	65	0.529	275
GX 225M-8	22	30	735	47.0	44.6	0.78	91.2	91.6	6.6	1.9	2.0	65	0.626	309
GX 250M-8	30	40	740	62.6	59.5	0.79	92.1	91.8	6.6	1.9	2.0	65	0.914	401
GX 280S-8	37	50	741	77.7	73.9	0.78	92.7	92.6	6.6	1.9	2.0	65	1.85	567
GX 280M-8	45	60	742	92.9	88.2	0.79	93.2	93.6	6.6	1.9	2.0	65	2.22	651
GX 315S-8	55	75	741	114	109	0.78	93.7	93.6	6.6	1.8	2.0	70	2.97	1000
GX 315M-8	75	100	741	154	146	0.78	94.4	94.2	6.6	1.8	2.0	70	3.96	1100
GX 315L1-8	90	125	741	179	170	0.81	94.7	94.6	6.6	1.8	2.0	72	4.65	1160
GX 315L2-8	110	150	741	217	206	0.81	95.1	94.8	6.4	1.8	2.0	72	5.40	1230
GX 355M1-8	132	180	742	256	244	0.82	95.4	95.5	6.4	1.8	2.0	72	8.36	1700
GX 355M2-8	160	220	742	310	294	0.82	95.7	95.6	6.4	1.8	2.0	73	9.59	1750
GX 355L-8	200	270	742	387	368	0.82	95.7	95.8	6.4	1.8	2.0	73	11.3	1850
GX 400L1-8	250	340	743	496	471	0.80	95.7	95.8	6.5	1.6	2.2	75	19.1	2770
GX 400L2-8	315	420	743	624	593	0.80	95.8	95.9	6.5	1.6	2.2	75	23.0	2980
GX 400L3-8	355	475	743	704	669	0.80	95.8	95.9	6.5	1.6	2.2	75	25.2	3120



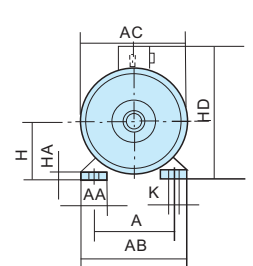
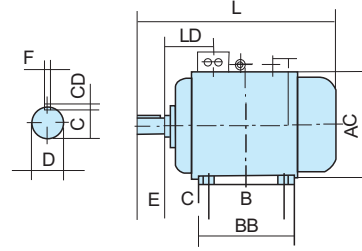
H80~90



H100~355



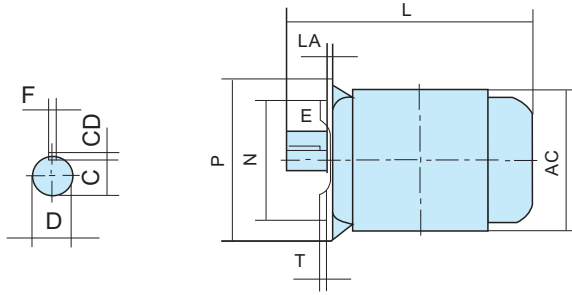
H400



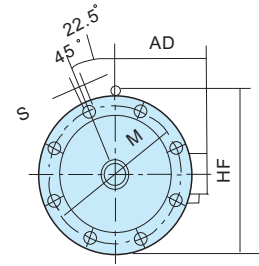
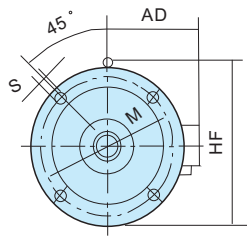
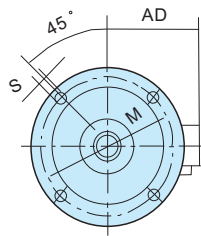
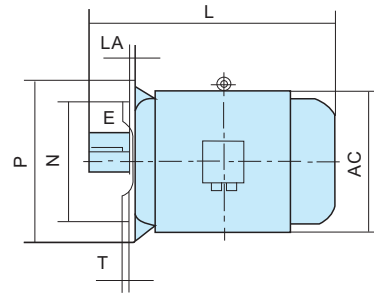
HIGH EFFICIENCY MOTOR OVERALL & INSTALLATION DIMENSIONS (B3)

Frame	Poles	Mounting Dimensions And Tolerance(mm)																			
		A	AA	AB	AC	AD	B	BB	C	D	E	F	G	GD	H	HA	HB	HD	K	L	LD
80	2~6	125	34	160	160	155	100		50 ± 1.5	19	40 ± 0.310	6	15.5	6	80	10	-	235	10	300	76
90S	2~6	140	36	180	175	160	100		56 ± 1.5	24	50 ± 0.310	8	20	7	90	12	-	255	10	355	75
90L	2~8	140	36	180	175	160	125	130	56 ± 1.5	24	50 ± 0.310	8	20	7	90	12	-	255	10	385	75
100L	2~8	160	40	200	200	180	140	180	63 ± 2.0	28	60 ± 0.370	8	24	7	100	14	147	270	12	430	83
112M	2~8	190	45	230	220	190	140	210	70 ± 2.0	28	60 ± 0.370	8	24	7	112	15	150	300	12	465	87
132S	2~8	216	55	270	275	210	140	235	89 ± 2.0	38	80 ± 0.370	10	33	8	132	18	181	345	12	510	102
132M	4~8	216	55	270	275	210	178	250	89 ± 2.0	38	80 ± 0.370	10	33	8	132	18	181	345	12	550	102
160M	2~8	254	65	320	330	255	210	230	108 ± 3.0	42	110 ± 0.430	12	37	8	160	20	221	420	15	615	142
160L	2~8	254	65	320	330	255	254	270	108 ± 3.0	42	110 ± 0.430	12	37	8	160	20	221	420	15	670	145
180M	2~8	279	70	355	380	280	241	250	121 ± 3.0	48	110 ± 0.430	14	42.5	9	180	22	237	455	15	700	164
180L	4~8	279	70	355	380	280	279	294	121 ± 3.0	48	110 ± 0.430	14	42.5	9	180	22	237	455	15	740	164
200L	2~8	318	70	395	420	305	305	311	133 ± 3.0	55	110 ± 0.430	16	49	10	200	25	249	505	19	770	191
225S	4,8	356	75	435	470	335	286	349	149 ± 4.0	60	140 ± 0.500	18	53	11	225	28	286	560	19	815	191
225M	2	356	75	435	470	335	311	369	149 ± 4.0	55	110 ± 0.430	16	49	10	225	28	286	560	19	820	197
225M	4~8	356	75	435	470	335	311	368	149 ± 4.0	60	140 ± 0.500	18	53	11	225	28	286	560	24	845	197
250M	2	406	80	490	510	370	349	393	168 ± 4.0	60	140 ± 0.500	18	53	11	250	30	316	615	24	910	215
250M	4~8	406	80	490	510	370	349	393	168 ± 4.0	65	140 ± 0.500	18	58	11	250	30	316	615	24	910	215
280S	2	457	85	550	590	410	368	445	190 ± 4.0	65	140 ± 0.500	18	58	11	280	35	395	700	24	1000	221
280S	4~8	457	85	550	590	410	368	445	190 ± 4.0	75	140 ± 0.500	20	67.5	12	280	35	395	700	24	1000	221
280M	2	457	85	550	590	410	419	530	190 ± 4.0	65	140 ± 0.500	18	58	11	280	35	395	700	24	1050	221
280M	4~8	457	85	550	590	410	419	530	190 ± 4.0	75	140 ± 0.500	20	67.5	12	280	35	395	700	24	1050	221
315S	2	508	120	635	645	530	406	581	216 ± 4.0	65	140 ± 0.500	18	58	11	315	45	440	815	28	1178	257
315S	4~8	508	120	635	645	530	406	581	216 ± 4.0	80	170 ± 0.500	22	71	14	315	45	440	815	28	1208	257
315M	2	508	120	635	645	530	457	616	216 ± 4.0	65	140 ± 0.500	18	58	11	315	45	440	815	28	1238	257
315M	4~8	508	120	635	645	530	457	616	216 ± 4.0	80	170 ± 0.500	22	71	14	315	45	440	815	28	1268	257
315L	2	508	120	635	645	530	508	676	216 ± 4.0	65	140 ± 0.500	18	58	11	315	45	440	815	28	1288	257
315L	4~8	508	120	635	645	530	508	676	216 ± 4.0	80	170 ± 0.500	22	71	14	315	45	440	815	28	1318	257
355M	2	610	116	730	710	650	560	726	254 ± 4.0	75	140 ± 0.500	20	67.5	12	355	52	495	1010	28	1500	284
355M	4~8	610	116	730	710	650	560	726	254 ± 4.0	95	170 ± 0.570	25	85	14	355	52	495	1010	28	1530	284
355L	2	610	116	730	710	650	630	820	254 ± 4.0	75	140 ± 0.500	20	67.5	12	355	52	495	1010	28	1500	284
355L	4~8	610	116	730	710	650	630	820	254 ± 4.0	95	170 ± 0.570	25	86	14	355	52	495	1010	28	1350	284
400L	4~8	686	150	840	826	-	710	820	280 ± 4.0	100	210 ± 0.570	28	90	16	400	55	555	1160	35	1910	425

H80~90



H100~280



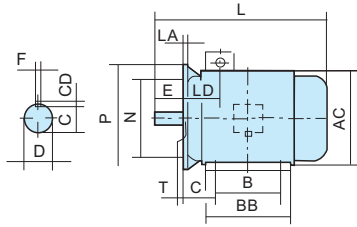
H80~90

H100~200

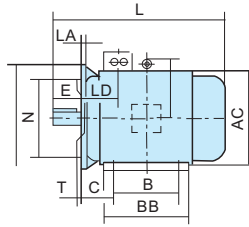
H225~280

HIGH EFFICIENCY MOTOR OVERALL & INSTALLATION DIMENSIONS (B5)

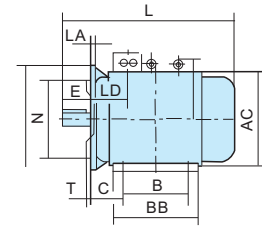
Frame	Flange No.	Poles	Mounting Dimensions And Tolerance(mm)															
			AC	AD	D	E	F	G	GD	HF	L	LA	M	N	P	R	S	T
80	FF165	2~6	160	155	19	40 ± 0.031	6	15.5	6	200	300	12	165	130	200	0 ± 1.5	12	3.5
90S	FF165	2~6	175	160	24	50 ± 0.310	8	20	7	200	355	12	165	130	200	0 ± 1.5	12	3.5
90L	FF165	2~8	175	160	24	50 ± 0.310	8	20	7	200	385	12	165	130	200	0 ± 1.5	12	3.5
100L	FF215	2~8	200	180	28	60 ± 0.370	8	24	7	270	430	13	215	180	250	0 ± 2.0	15	4
112M	FF215	2~8	220	190	28	60 ± 0.370	8	24	7	275	465	14	215	180	250	0 ± 2.0	15	4
132S	FF265	2~8	275	210	38	80 ± .0370	10	33	8	330	510	14	265	230	300	0 ± 2.0	15	4
132M	FF265	4~8	275	210	38	80 ± 0.370	10	33	8	330	550	14	265	230	300	0 ± 2.0	15	4
160M	FF300	2~8	330	255	42	110 ± 0.430	12	37	8	385	615	15	300	250	350	0 ± 3.0	19	5
160L	FF300	2~8	330	255	42	110 ± 0.430	12	37	8	385	670	15	300	250	350	0 ± 3.0	19	5
180M	FF300	2~8	380	280	48	110 ± 0.430	14	42.5	9	430	700	15	300	250	350	0 ± 3.0	19	5
180L	FF300	4~8	380	280	48	110 ± 0.430	14	42.5	9	430	740	15	300	250	350	0 ± 3.0	19	5
200L	FF350	2~8	420	305	55	110 ± 0.430	16	49	10	480	770	17	350	300 ± 0.016	400	0 ± 3.0	19	5
225S	FF400	4,8	470	335	60	140 ± 0.500	18	53	11	535	815	20	400	350 ± 0.018	450	0 ± 4.0	19	5
225M	FF400	2	470	335	55	110 ± 0.430	16	49	10	535	820	20	400	350 ± 0.018	450	0 ± 4.0	19	5
225M	FF400	4~8	470	335	60	140 ± 0.500	18	53	11	535	845	20	400	350 ± 0.018	450	0 ± 4.0	19	5
250M	FF500	2	510	370	60	140 ± 0.500	18	53	11	595	910	22	500	450 ± 0.018	550	0 ± 4.0	19	5
250M	FF500	4~8	510	370	65	140 ± 0.500	18	58	11	595	910	22	500	450 ± 0.020	550	0 ± 4.0	19	5
280S	FF500	2	590	410	65	140 ± 0.500	18	58	11	680	1000	22	500	450 ± 0.020	550	0 ± 4.0	19	5
280S	FF500	4~8	590	410	75	140 ± 0.500	20	67.5	12	680	1000	22	500	450 ± 0.020	550	0 ± 4.0	19	5
280M	FF500	2	590	410	65	140 ± 0.500	18	58	11	680	1050	22	500	450 ± 0.020	550	0 ± 4.0	19	5
280M	FF500	4~8	590	410	75	140 ± 0.500	20	67.5	12	68	1050	22	500	450 ± 0.020	550	0 ± 4.0	19	5



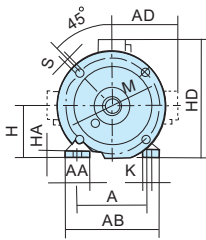
H80~90



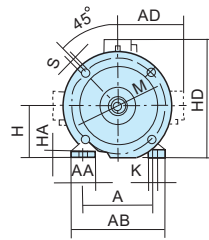
H100~355



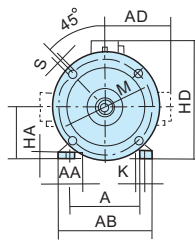
H400



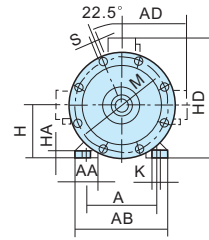
H80~90



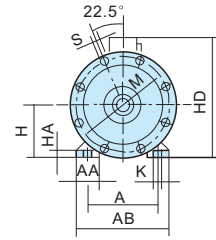
H100~200



H180~200



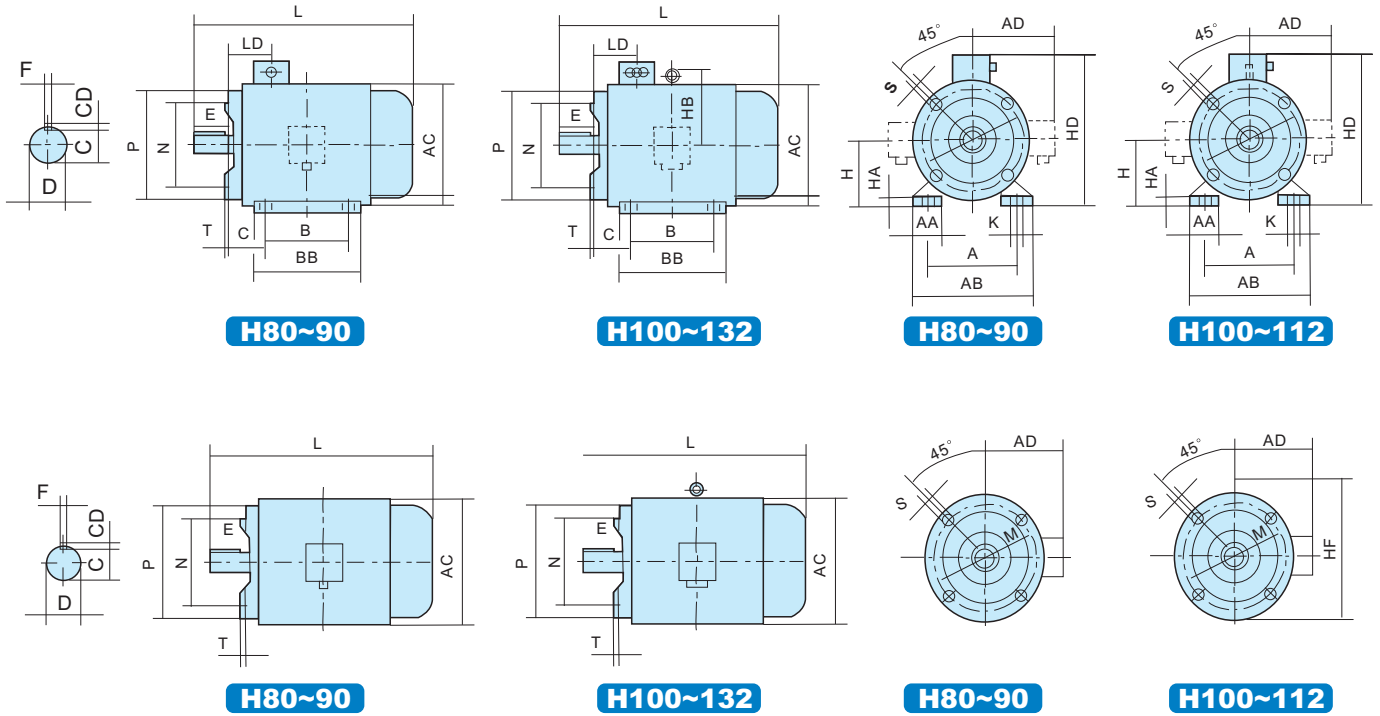
H255~355



H400

HIGH EFFICIENCY MOTOR OVERALL & INSTALLATION DIMENSIONS (B35)

Frame	Flange No.	Poles	Mounting Dimensions And Tolerance(mm)																											
			A	AA	AB	AC	AD	B	BB	C	D	E	F	G	GD	H	HA	HB	HD	K	L	LA	LD	M	N	P	R	S	T	
80	FF165	2-6	125	34	160	160	155	100	130	50±1.5	19	40±0.310	6	15.5	6	80	10	-	235	10	300	12	76	165	130	200	0±1.5	12	3.5	
90S	FF165	2-6	140	36	180	175	160	100	180	56±1.5	24	50±0.310	8	20	7	90	12	-	255	10	355	12	75	165	130	200	0±1.5	12	3.5	
90L	FF165	2-8	140	36	180	175	160	125	210	56±1.5	24	50±0.310	8	20	7	90	12	-	255	10	385	12	75	165	130	200	0±1.5	12	3.5	
100L	FF215	2-8	160	40	200	200	180	140	235	63±2.0	28	60±0.370	8	24	7	100	14	147	270	12	430	13	83	215	180	250	0±2.0	15	4	
112M	FF215	2-8	190	45	230	220	190	140	250	70±2.0	28	60±0.370	8	24	7	112	15	150	300	12	465	14	87	215	180	250	0±2.0	15	4	
132S	FF265	2-8	216	55	270	275	210	140	230	89±2.0	38	80±0.370	10	33	8	132	18	181	345	12	510	14	102	265	230	300	0±2.0	15	4	
132M	FF265	4-8	216	55	270	275	210	178	270	89±2.0	38	80±0.370	10	33	8	132	18	181	345	12	550	14	102	265	230	300	0±2.0	15	4	
160M	FF300	2-8	254	65	320	330	255	210	250	108±3.0	42	110±0.430	12	37	8	160	20	221	420	15	615	15	142	300	250	350	0±3.0	19	5	
160L	FF300	2-8	254	65	320	330	255	254	294	108±3.0	42	110±0.430	12	37	8	160	20	221	420	15	670	15	145	300	250	350	0±3.0	19	5	
180M	FF300	2-4	279	70	355	380	280	241	311	121±3.0	48	110±0.430	14	42.5	9	180	22	237	455	15	700	15	164	300	250	350	0±3.0	19	5	
180L	FF300	4-8	279	70	355	380	280	279	349	121±3.0	48	110±0.430	14	42.5	9	180	22	237	455	15	740	15	164	300	250	350	0±3.0	19	5	
200L	FF350	2-8	318	70	395	420	305	305	369	133±3.0	55	110±0.430	16	49	10	200	25	249	505	19	770	17	191	350	300±0.16	400	0±3.0	19	5	
225S	FF400	4,8	356	75	435	470	335	286	368	149±4.0	60	140±0.500	18	53	11	225	28	286	560	19	815	20	191	400	350±0.18	450	0±4.0	19	5	
225M	FF400	2	356	75	435	470	335	311	393	149±4.0	55	110±0.430	16	49	10	225	28	286	560	19	820	20	197	400	350±0.18	450	0±4.0	19	5	
225M	FF400	4-8	356	75	435	470	335	311	393	149±4.0	60	140±0.500	18	53	11	225	28	286	560	24	845	20	197	400	350±0.18	450	0±4.0	19	5	
250M	FF500	2	406	80	490	510	370	349	445	168±4.0	60	140±0.500	18	53	11	250	30	316	615	24	910	22	215	500	450±0.18	550	0±4.0	19	5	
250M	FF500	4-8	406	80	490	510	370	349	445	168±4.0	65	140±0.500	18	58	11	250	30	316	615	24	910	22	215	500	450±0.020	550	0±4.0	19	5	
280S	FF500	2	457	85	550	590	410	368	530	190±4.0	65	140±0.500	18	58	11	280	35	395	700	24	1000	22	221	500	450±0.020	550	0±4.0	19	5	
280S	FF500	4-8	457	85	550	590	410	368	530	190±4.0	75	140±0.500	20	67.5	12	280	35	395	700	24	1000	22	221	500	450±0.020	550	0±4.0	19	5	
280M	FF500	2	457	85	550	590	410	419	581	190±4.0	65	140±0.500	18	58	11	280	35	395	700	24	1050	22	221	500	450±0.020	550	0±4.0	19	5	
280M	FF500	4-8	457	85	550	590	410	419	581	190±4.0	75	140±0.500	20	67.5	12	280	35	395	700	24	1050	22	221	500	450±0.020	550	0±4.0	19	5	
315S	FF600	2	508	120	635	645	530	406	616	216±4.0	65	140±0.500	18	58	11	315	45	440	815	28	1178	22	257	600	550±0.022	660	0±4.0	19	6	
315S	FF600	4-8	508	120	635	645	530	406	616	216±4.0	80	170±0.500	22	71	14	315	45	440	815	28	1208	22	257	600	550±0.022	660	0±4.0	24	6	
315M	FF600	2	508	120	635	645	530	457	676	216±4.0	65	140±0.500	18	58	11	315	45	440	815	28	1238	22	257	600	550±0.022	660	0±4.0	24	6	
315M	FF600	4-8	508	120	635	645	530	457	676	216±4.0	80	170±0.500	22	71	14	315	45	440	815	28	1268	22	257	600	550±0.022	660	0±4.0	24	6	
315L	FF600	2	508	120	635	645	530	508	726	216±4.0	65	140±0.500	18	58	11	315	45	440	815	28	1288	22	257	600	550±0.022	660	0±4.0	24	6	
315L	FF600	4-8	508	120	635	645	530	508	726	216±4.0	80	170±0.500	22	71	14	315	45	440	815	28	1318	22	257	600	550±0.022	660	0±4.0	24	6	
355M	FF740	2	610	116	730	710	650	560	820	254±4.0	75	140±0.500	20	67.5	12	355	52	495	1010	28	1500	25	284	740	680±0.025	800	0±4.0	24	6	
355M	FF740	4-8	610	116	730	710	650	560	820	254±4.0	95	170±0.570	25	85	14	355	52	495	1010	28	1530	25	284	740	680±0.025	800	0±4.0	24	6	
355L	FF740	2	610	116	730	710	650	630	820	254±4.0	75	140±0.500	20	67.5	12	355	52	495	1010	28	1500	25	284	740	680±0.025	800	0±4.0	24	6	
355L	FF740	4-8	610	116	730	710	650	630	820	254±4.0	95	170±0.570	25	86	14	355	52	495	1010	28	1350	25	284	740	680±0.025	800	0±4.0	24	6	
400L	FF940	4-8	686	150	840	826	-	710	1075	280±4.0	100	210±0.570	28	90	16	400	55	555	1160	35	1910	32	425	940	880±0.025	1000	0±4.0	28	6	



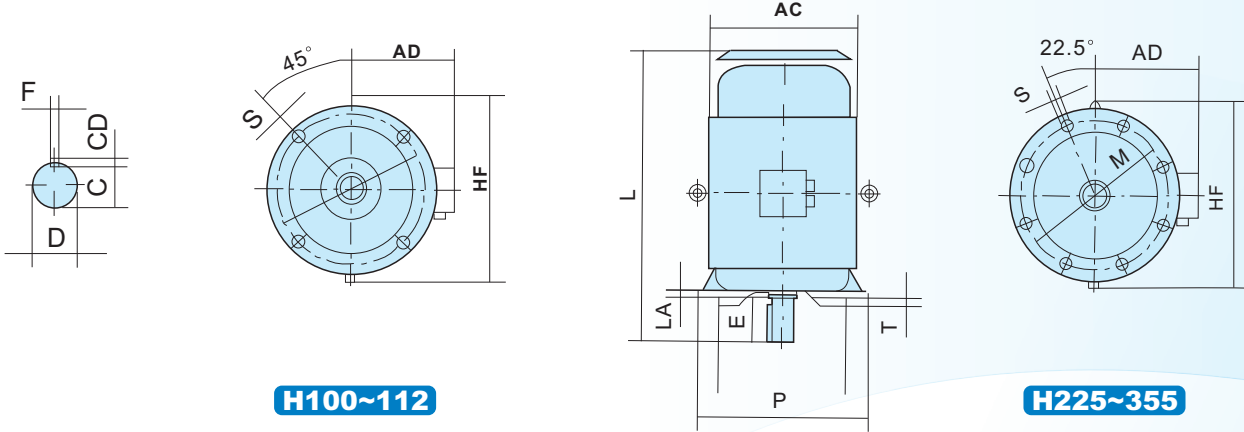
HIGH EFFICIENCY MOTOR OVERALL & INSTALLATION DIMENSIONS (B14)

Frame	Flange No.	Poles	Mounting Dimensions And Tolerance(mm)																									
			A	AA	AB	AC	AD	B	BB	C	D	E	F	G	GD	H	HA	HB	HD	K	L	LD	M	N	P	R	S	T
80	FF100	2~6	125	34	160	160	155	100	130	50±1.5	19	40±0.310	6	15.5	6	80	10	-	235	10	300	76	100	80	142	0±1.5	M6	3.0
90S	FF115	2~6	140	36	180	175	160	100	180	56±1.5	24	50±0.310	8	20	7	90	12	-	255	10	355	75	115	95	148	0±1.5	M8	3.0
90L	FF115	2~8	140	36	180	175	160	125	210	56±1.5	24	50±0.310	8	20	7	90	12	-	255	10	385	75	115	95	148	0±1.5	M8	3.0
100L	FF130	2~8	160	40	200	200	180	140	235	63±2.0	28	60±0.370	8	24	7	100	14	147	270	12	430	83	130	110	177	0±1.5	M8	3.5
112M	FF130	2~8	190	45	230	220	190	140	250	70±2.0	28	60±0.370	8	24	7	112	15	150	300	12	465	87	130	110	190	0±1.5	M8	3.5
132S	FF165	2~8	216	55	270	275	210	140	230	89±2.0	38	80±0.370	10	33	8	132	18	181	345	12	510	102	165	130	200	0±1.5	M10	3.5
132M	FF165	4~8	216	55	270	275	210	178	270	89±2.0	38	80±0.370	10	33	8	132	18	181	345	12	550	102	165	130	200	0±1.5	M10	3.5

**R is the distance from the matching surface of flange to the shoulder of shaft extension.

Tolerance(mm)

D		F		G & H		K		N		S		T	
19≤D≤28	+0.009	F=6	0	G=15.5	0	K=10	+0.360	N=80	+0.012	12≤S≤15	+0.043	T=3.0	0
	-0.004		-0.030		-0.10		0						-0.100
38≤D≤48	+0.018	8≤F≤10	0	20≤G≤90	0	12≤K≤15	+0.430	95≤N≤110	+0.013	19≤S≤28	+0.520	3.5≤T≤5	0
	+0.002		-0.036		-0.20		0						-0.120
55≤D≤80	+0.030	12≤F≤18	0	80≤H≤250	0	19≤K≤28	+0.520	130≤N≤180	+0.014			T=6	0
	+0.011		-0.043		-0.5		0						-0.150
95≤D≤100	+0.035	20≤F≤28	0	280≤H≤400	0	K=35	+0.620	230≤N≤250	+0.016				
	+0.013		-0.052		-1.0		0						0.013



H100~112

H225~355

HIGH EFFICIENCY MOTOR OVERALL & INSTALLATION DIMENSIONS (B14)

Frame	Flange No.	Poles	Mounting Dimensions And Tolerance(mm)															
			AC	AD	D	E	F	G	GD	HF	L	LA	M	N	P	R	S	T
180M	FF300	2~4	380	280	48	110 ± 0.430	14	42.5	9	474	760	15	300	250	350	0 ± 3.0	19	5
100L	FF300	4~8	380	280	48	110 ± 0.430	14	42.5	9	474	800	15	300	250	350	0 ± 3.0	19	5
200L	FF350	2~8	420	305	55	110 ± 0.430	16	49	10	500	840	17	350	300 ± 0.016	400	0 ± 3.0	19	5
225S	FF400	4,8	470	335	60	140 ± 0.500	18	53	11	572	905	20	400	350 ± 0.018	450	0 ± 4.0	19	5
225M	FF400	2	470	335	55	110 ± 0.430	16	49	10	572	910	20	400	350 ± 0.018	450	0 ± 4.0	19	5
225M	FF400	4~8	510	335	60	140 ± 0.500	18	53	11	572	935	20	400	350 ± 0.018	550	0 ± 4.0	19	5
250M	FF500	2	510	370	60	140 ± 0.500	18	53	11	632	1015	22	500	450 ± 0.018	550	0 ± 4.0	19	5
250M	FF500	4~8	590	370	65	140 ± 0.500	18	58	11	632	1015	22	500	450 ± 0.020	550	0 ± 4.0	19	5
280S	FF500	2	590	410	65	140 ± 0.500	18	58	11	790	1110	22	500	450 ± 0.020	550	0 ± 4.0	19	5
280S	FF500	4~8	590	410	75	140 ± 0.500	20	67.5	12	790	1110	22	500	450 ± 0.020	550	0 ± 4.0	19	5
280M	FF500	2	590	410	65	140 ± 0.500	18	58	11	790	1150	22	500	450 ± 0.020	550	0 ± 4.0	19	5
280M	FF500	4~8	590	410	75	140 ± 0.500	20	67.5	12	790	1150	22	500	450 ± 0.020	550	0 ± 4.0	19	5
315S	FF600	2	645	530	65	140 ± 0.500	18	58	11	880	1260	22	600	550 ± 0.022	660	0 ± 4.0	24	6
315S	FF600	4~8	645	530	80	170 ± 0.500	22	71	14	880	1290	22	600	550 ± 0.022	660	0 ± 4.0	24	6
315M	FF600	2	645	530	65	140 ± 0.500	18	58	11	880	1320	22	600	550 ± 0.022	660	0 ± 4.0	24	6
315M	FF600	4~8	645	530	80	170 ± 0.500	22	71	14	880	1350	22	600	550 ± 0.022	660	0 ± 4.0	24	6
315L	FF600	2	645	530	65	140 ± 0.500	18	58	11	880	1370	22	600	550 ± 0.022	660	0 ± 4.0	24	6
315L	FF600	4~8	645	530	80	170 ± 0.500	22	71	14	990	1400	22	600	550 ± 0.022	660	0 ± 4.0	24	6
355M	FF740	2	710	650	75	140 ± 0.500	20	67.5	12	990	1580	25	740	680 ± 0.025	800	0 ± 4.0	24	6
355M	FF740	4~8	710	650	95	170 ± 0.570	25	85	14	990	1610	25	740	680 ± 0.025	800	0 ± 4.0	24	6
355L	FF740	2	710	650	75	140 ± 0.500	20	67.5	12	990	1580	25	740	680 ± 0.025	800	0 ± 4.0	24	6
355L	FF740	4~8	710	650	95	170 ± 0.570	25	86	14	990	1610	25	740	680 ± 0.025	800	0 ± 4.0	24	6
400L	FF940	4~8	826		100	210 ± 0.570	28	90	16	1110	1990	32	940	880 ± 0.025	1000	0 ± 4.0	28	6